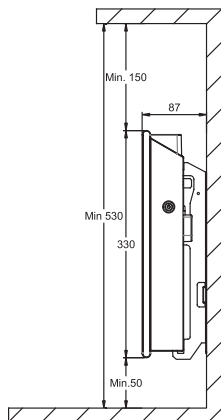
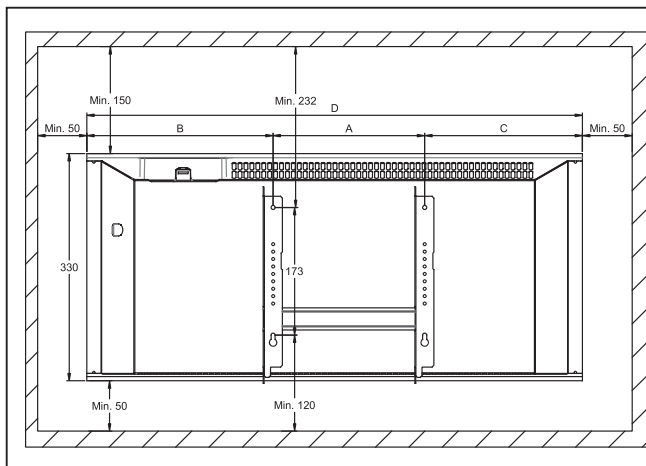
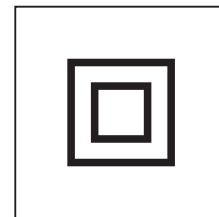
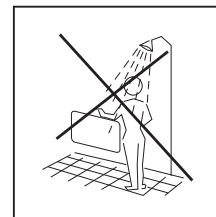
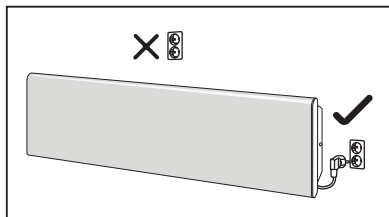
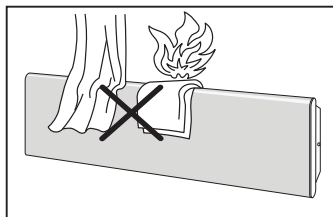
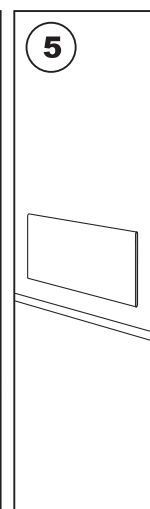
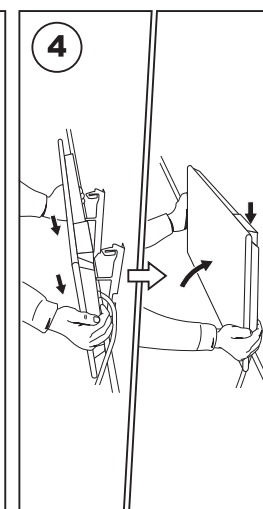
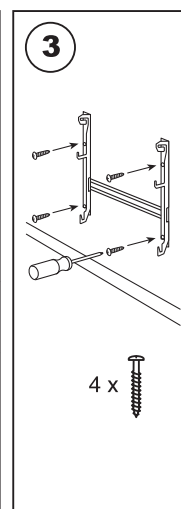
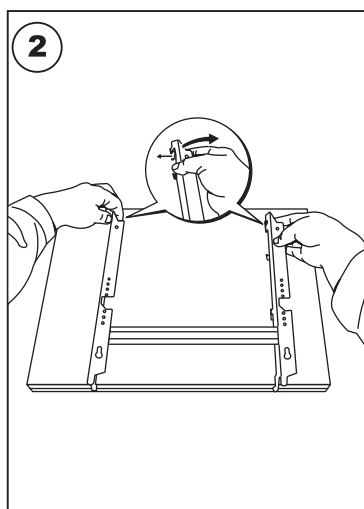
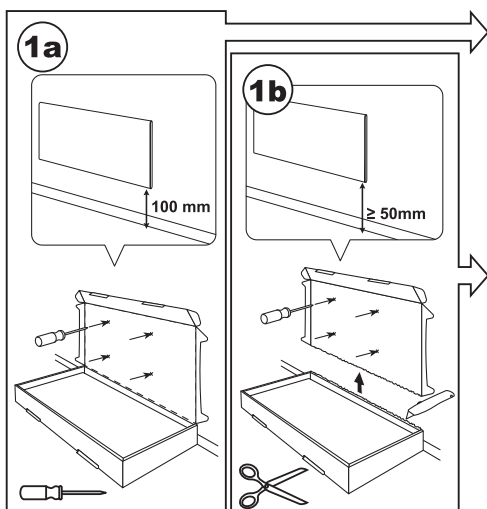


IP24C Class II



NEO H	WAT	B	A	C	D
NEO H 02	250	227	201	92	520
NEO H 04	400	227	201	137	565
NEO H 06	600	227	201	207	635
NEO H 08	800	236	302	212	750
NEO H 10	1000	268	302	239	809
NEO H 12	1200	356	302	326	984
NEO H 14	1400	263	604	227	1094
NEO H 20	2000	426	604	403	1433



Uvoznik i distributer:

ROVEX INŽENJERING d.o.o.

Bulevar Crvene Armije 11b/lok7
11070 Novi Beograd
Tel: + 381 11 3115208

e-mail: prodaja@rovex.co.rs

<https://www.rovex.rs/adax-neo-wifi>

www.rovex.rs

Proizvodi Adax AS Norveška

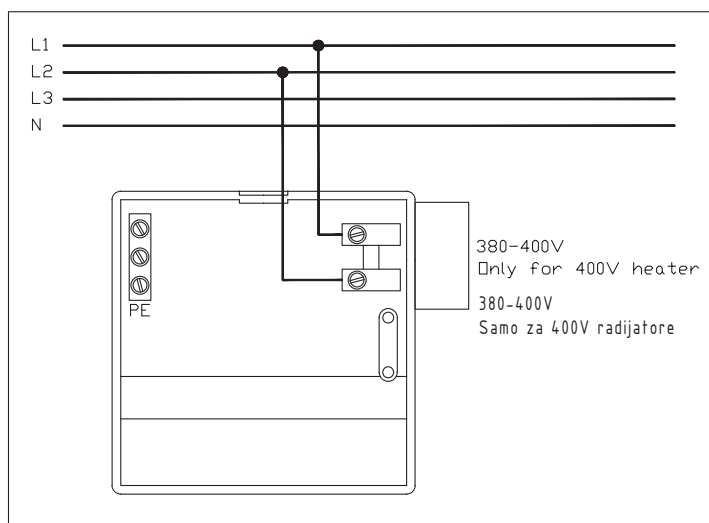
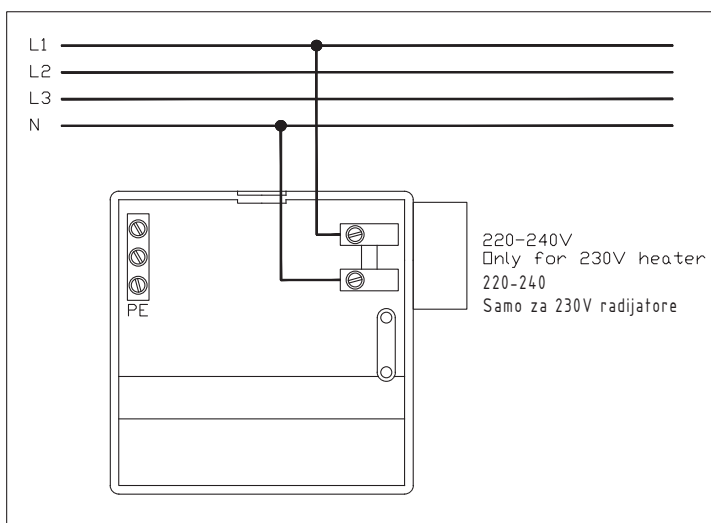
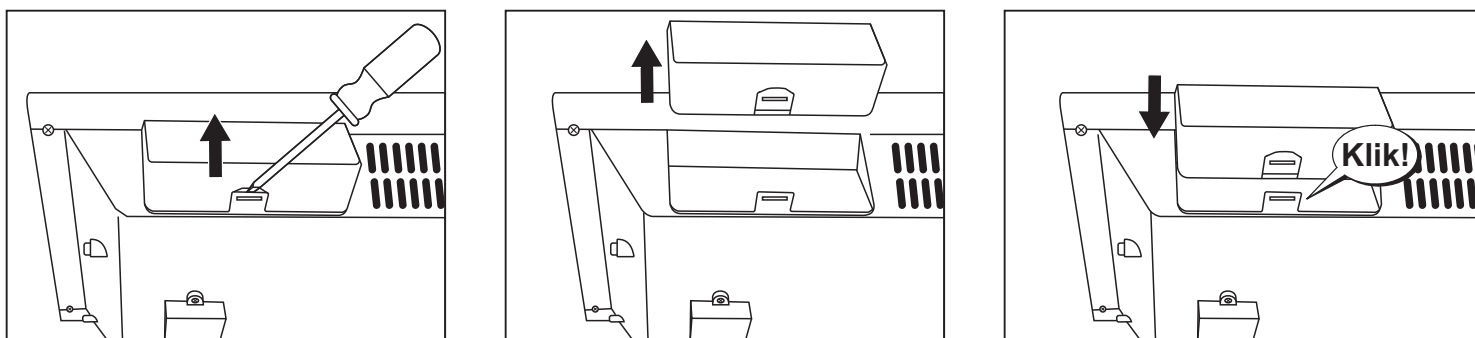
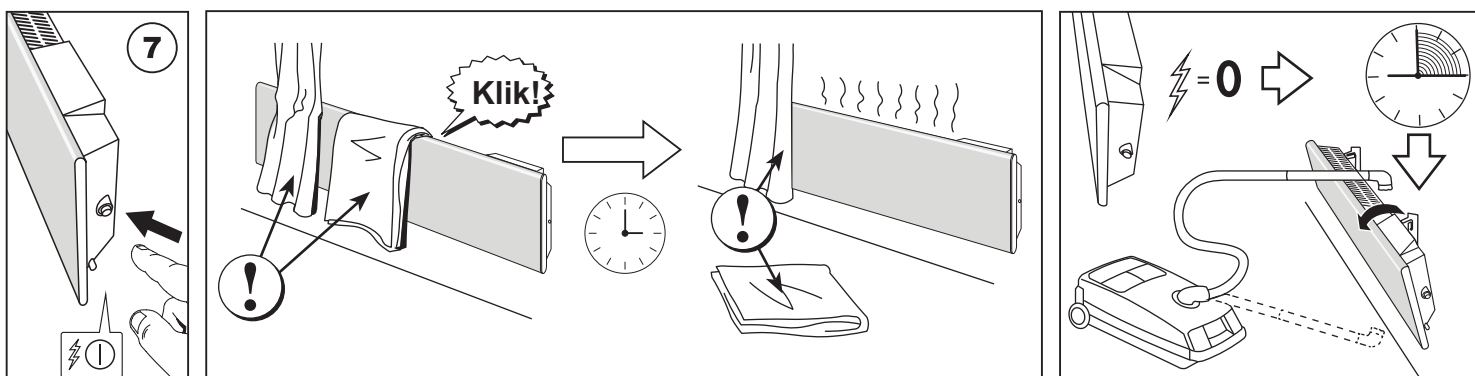
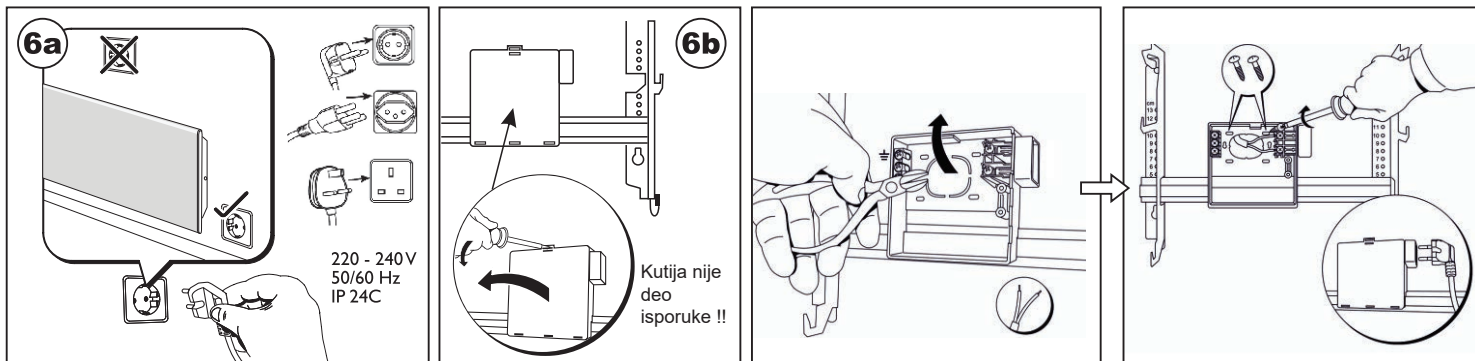


Servis:

ROVEX INŽENJERING d.o.o.

Bulevar Crvene Armije 11a/lok15
11070 Novi Beograd
Tel: + 381 11 3115208

e-mail: servis@rovex.co.rs



RS Ako je kabl za napajanje oštećen, mora ga zameniti proizvođač, njegov serviser ili kvalifikovano lice kako bi se izbegla moguća opasnost.

EN If the supply cord is damaged, it must be replaced by the manufacturer, its service agent or similarly qualified persons in order to avoid hazard.